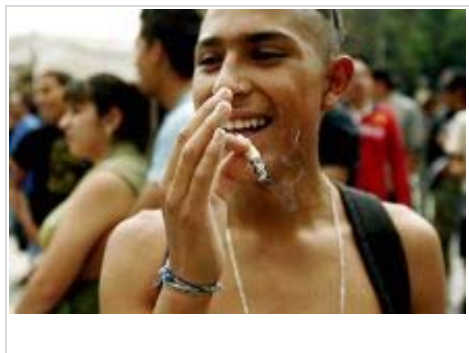




Marijuana and music: Pot-positive pop leads teens to toké

By Norfolk Health Care Examiner, Ed Lamb
December 23, 10:28 AM



Dec. 22--Your grandparents were right. Listening to all that rap and rock and "whatever-it-is-it's-certainly-not-music" will lead to nothing but drugs and devilry.

At least, new survey data published Dec. 22 in the online version of the journal *Addiction* show ninth-graders who constantly hear songs extolling marijuana use have a high chance of smoking pot themselves. Lead study author Brian Primack and colleagues wrote that teens who hear between 100 and 144 marijuana-related song lyrics each day

are 83 percent more likely than their less-exposed classmates to use cannabis.

Primack further explained in a press release that "interestingly, we also found that exposure to marijuana in music was not associated with other high-risk behaviors, such as excessive alcohol consumption. This suggests that there is a real link between the marijuana lyrics and marijuana use."

The 949 freshman polled for the study examining the link between music and nonmedical marijuana use have almost certainly never heard the song above. Nonetheless, watching it might serve as a warning to them what can happen when they take lyrics such as these from the much hipper Lil' Wayne's "I Feel Like Dyin'" as endorsements of how to behave:

I am sittin' on the clouds
I got smoke coming from my seat
I can play basketball with the moon
I got the whole world at my feet
Playin' touch football on Marijuana Street
Or in a marijuana field
You are so beneath my cleats
Get high, so high that I feel like lying
Down in a cigar

Copyright © 2009 Clarity Digital Group LLC d/b/a Examiner.com. All Rights reserved.

Advertisement

TARGET WEB COUPON **EXPIRES 2/27/10**

25¢ each
with purchase of twenty-five
4x6" Kodak instant prints

This coupon is intended for use by the original recipient only and is void if copied, scanned, transferred, purchased, sold or prohibited by law. Limit one offer per transaction. GiftCards and tax will not be included in determining purchase total. No cash value. Offer available at Target One Hour Photo Labs. Go to Target.com/photo for the location nearest you. One Hour service limited to machine capacity.




9856-0113-1882-4674-0306-4005-84





**Norfolk Health Care
Examiner**

Ed Lamb

To see more, visit us at examiner.com

Copyright © 2009 Clarity Digital Group LLC d/b/a Examiner.com. All Rights reserved.

Advertisement

TARGET WEB COUPON **EXPIRES 2/27/10**

25¢ each
with purchase of twenty-five
4x6™ Kodak instant prints



This coupon is intended for use by the original recipient only and is void if copied, scanned, transferred, purchased, sold or prohibited by law. Limit one offer per transaction. GiftCards and tax will not be included in determining purchase total. No cash value. Offer available at Target One Hour Photo Labs. Go to Target.com/photo for the location nearest you. One Hour service limited to machine capacity.



9856-0113-1882-4674-0306-4005-84